



Key Attainment Areas in Insight

To get a sense of how recent improvements within a school have impacted attainment, examine Local Measures (cohorts) – this is where we will see how schools have supported pupils through the last few years and the impact on any changes in the BGE provision coming through.

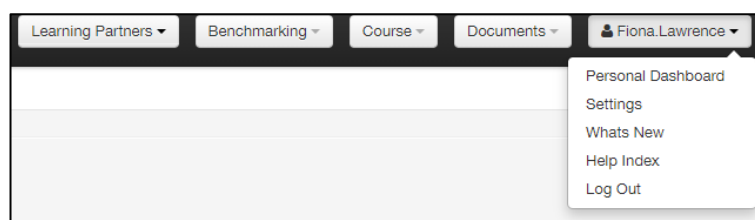
This paper will consider how the following measures can support analysis:

- Local Benchmarking Measure: Attainment vs Deprivation
- Breadth & Depth : All Candidates
- Local Benchmarking Measure: Improving Attainment for All
 - Highest 20%
 - Middle 60%
 - Lowest 20%
- Local Benchmarking Measure: Literacy and Numeracy

Firstly - Five year trends – you only need to do this once (per Update)

Please make sure your settings are at 5 years rather than 3 this allows for a better overview of attainment trends.

- Click on your User name in the top right of the Insight page
- Select “Settings”
- Click the radio button for 5 years



User Preferences

Select how many years of data you wish to see displayed in multi-year charts and tables

Number of years 3 5

Select your preference for textured (hatched) or coloured charts

Prefer textured charts

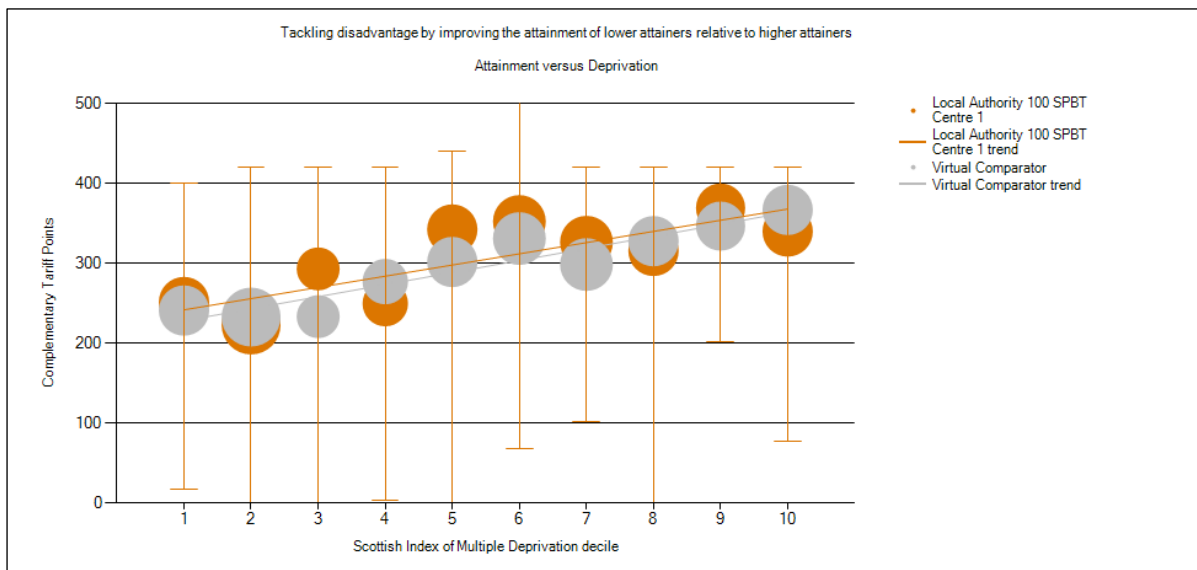
[Save](#)



1. Local Benchmarking Measure: Attainment vs Deprivation

Change filters to look at;

- “Compare With” to Virtual comparator
- “Stage” to S4
- “Basis” Complementary Tariff points



Look at the school orange “blobs” and the orange range bars.

- Do pupils in all deciles get (nearly) maximum attainment?
- Are there any pupils with no (or very low) attainment?
- Look for patterns *over time* e.g. are some deciles *always* below VC – why?

Complementary tariff points are (often) their “*best five ‘pieces’ of attainment*”¹ for each pupil. Most S4 pupils do some, or multiple, National 5s – a Nat 5 A is worth 84 Insight tariff points – so maximum attainment for the majority of S4 learners is $5 \times 84 = 420$ tariff points. (Note any S4 Level 6 (or 7) presentation in “long” courses will likely increase some pupils’ tariff score, which will increase the overall average.)

¹ This is a simplified explanation of Complementary Tariff – please read Deep Dive 1 for greater detail



Insight 'Deep Dive' 4
Updated February 2024
Minor amendments



2. Check with Breadth & Depth: All Candidates

Selected Options ✕

Year

Stage Based upon (stage roll)

Breadth And Depth Area

Display Numbers or Percentages

ASN Highest SCQF Course Attained

EAL LAC

The selected year is 2020
[Show/Hide Tabular Data](#)
[Download Data](#)

Awards	Level 1	Level 2	Level 3	Level 4	Level 5	Level 6	Level 7	Number in Cohort
1 or more	147	147	147	144	128	1	0	153
2 or more	144	144	143	137	121	0	0	153
3 or more	139	139	139	129	112	0	0	153
4 or more	135	135	135	128	103	0	0	153
5 or more	130	130	130	123	87	0	0	153
6 or more	120	120	120	114	68	0	0	153
7 or more	82	82	82	77	37	0	0	153
8 or more	42	42	42	34	15	0	0	153
9 or more	14	14	14	13	8	0	0	153
10 or more	6	6	5	5	2	0	0	153

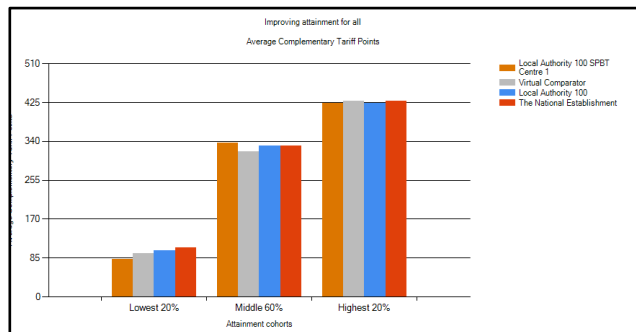
- How many S4 pupils got no course awards in S4? (Breadth and Depth shows *completed courses*). Who and why?
 - How many did level 6 in S4? What are the progression routes for these pupils?
 - What proportion of the pupils completed 5 @ Level 5 etc.
 - How many subjects does a typical S4 do in your school? What percentage of learners are gaining an award in each subject? Are there subject patterns to where learners are more frequently completing courses?
- Change “*Display Numbers or Percentages*” filter to Number to Percentages to compare school attainment with VC (below the school data – scroll down) attainment more easily.



3. Local Benchmarking Measure: Improving Attainment for All

Change Options to look at;

- S4
- Complementary Tariff points



Look at each cohort in turn using 'Explore Different Breakdowns'

Local Benchmarking Measure: Improving Attainment for All

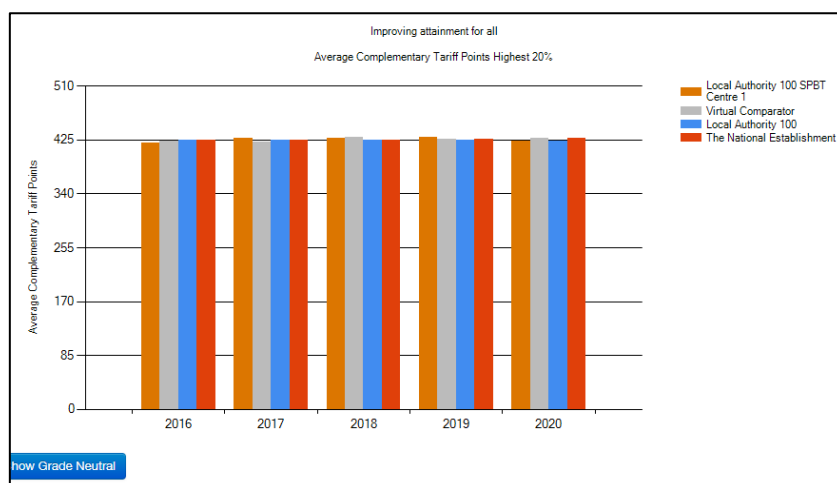
View Options | Change Options | Explore different breakdowns | Help with this measure

The selected year is 2020

- Local Attainment for All, Lowest 20%
- Local Attainment for All, Middle 60%
- Local Attainment for All, Highest 20%

For Highest 20%

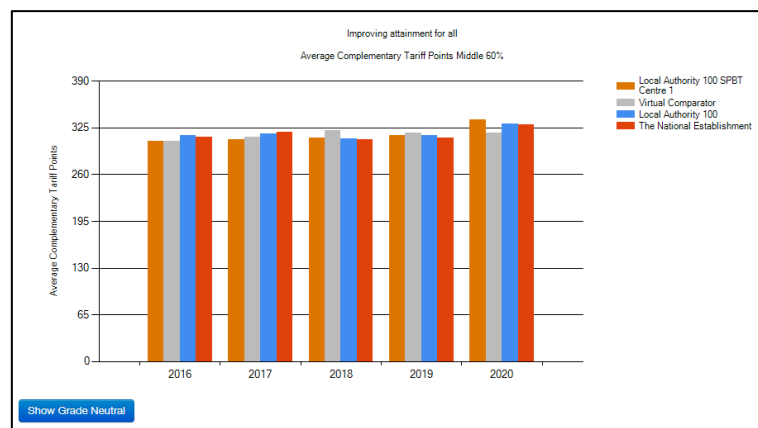
- How near to 420 does the tariff get? Curriculum models with Level 6 presentation in S4 may effect this and allow scores above 420. Take care when comparing to VC, authority or national – these too are affected by curriculum models, look at the 5 year trend.
- Change Options to S5 – What is the translation rate from S4 in 2020 to S5 in 2021?
 - 1020 tariff points is 5 Highers at A
 - 998 tariff points is 4 Highers at A and one B as an average.
 - 800 is 5 Highers at C





For Middle 60%

- How similar to nationally average is the school? Compare the VC to National. The one in the picture is some way below suggesting this school serves a more deprived area or pupils with more ASN than nationally average.
In 2021 we are using SIMD 2020 for the first time, thus in some schools the VC may look different from previous years, where SIMD 2016 was used as the basis.
- How near to 320 does the tariff get? Compare to VC, authority and national.
 - 320 tariff points is an average of 5 National 5 at C per pupil
 - 295 tariff points is an average of 5 National 5 at D per pupil
- Change Options to S5 – What is the translation rate from S4 in 2020 to S5 in 2021?
 - 800 is 5 Highers at C
 - 608 tariff points is 3 Highers at C and 2 National 5 at C

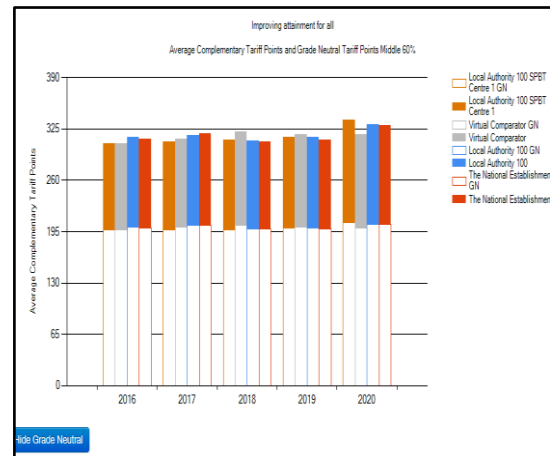


Click the Grade Neutral button

This splits the attainment into what could be described as attainment level (white part) and grade add on (coloured part).

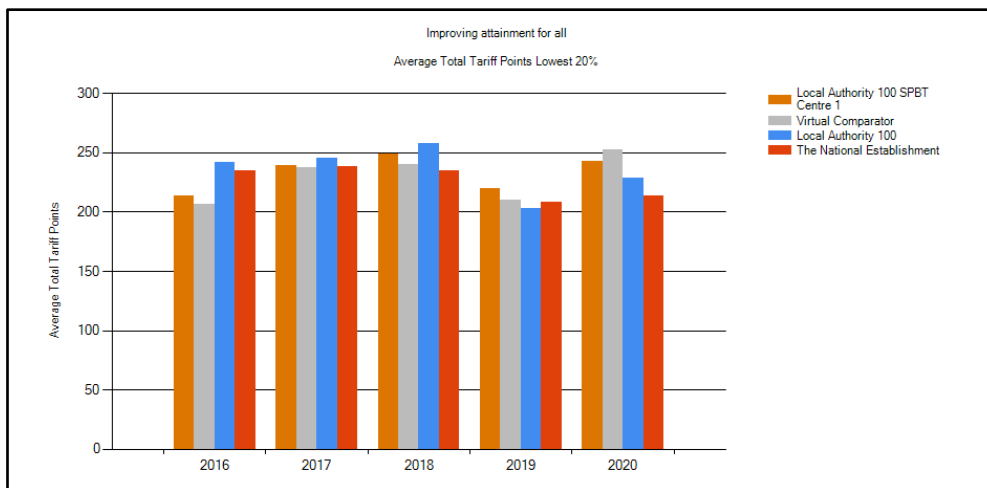


- If the white bar is above the VC white bar it is likely that more pupils, in more subject areas, were given a chance to do a level 5 qualification rather than presented at level 4.
- If the white bar is below the VC, then there may have been fewer presentations at National 5 and/or not as many opportunities to gain a level 5 in a 'non-national' course (NPA, SfW etc).



For Lowest 20%

- Move to Total points (from complementary) using Change Options to look at volume of attainment rather than quality. How does this compare to VC?
- Use the Grade Neutral button to compare ambition /aspiration for pupils against VC.
- Change Options to S5 – What is the total tariff points for the S5 lowest 20%? This represents all their attainment over S4 and S5.





- Now go to Change Options and change the filter (Calculation Type) from Cumulative to Annual – this will now show the attainment these pupils got in S5.
- The graph below shows 70 points as an average per pupil – representing just over 2 National 4s gained in S5 as an average per pupils in this cohort.

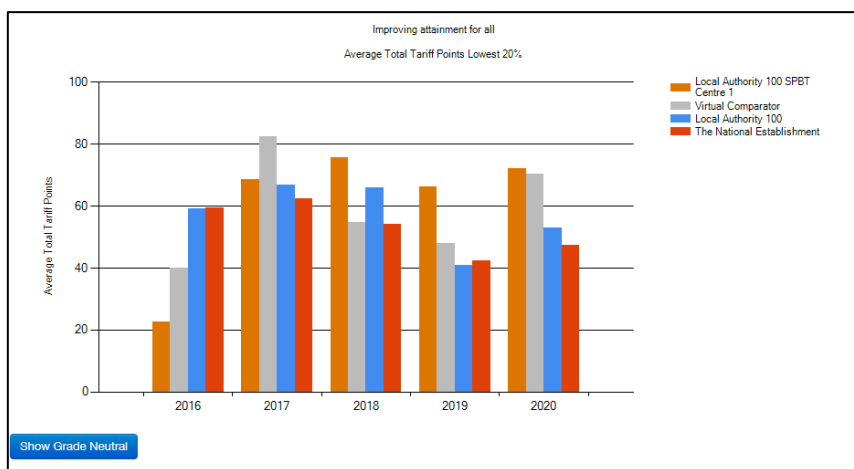
Selected Options

Stage: S5 Based upon (stage roll): S5

Calculation Type: Cumulative

Basis: Total Tariff Points

ASN: All Gender: All



4. Local Benchmarking Measure: Literacy and Numeracy

- Use Explore Different Breakdowns to split this into separate measures

Local Benchmarking Measure: Literacy and Numeracy

View Options Change Options Explore different breakdowns Help with this measure

Local Literacy and Numeracy, by SCQF level
Local Literacy and Numeracy, by Measure and numeracy

- Use Change Options to look at S4.
- Change Options can also be used to look at SCQF 3 and 4 instead of 4 and 5 if needed.

Selected Options

Stage: S4 Based upon (stage roll): S4

SCQF Levels: 4 and 5

ASN: Highest SCQF Course Attained



- Use Show/hide Tabular data to look at the numbers

[Add to personal dashboard](#)
[Show/Hide Tabular Data](#)
[Download Data](#)

Establishment	Year	% Level 4 Literacy	% Level 4 Numeracy	% Level 5 Literacy	% Level 5 Numeracy	Number in Cohort
Local Authority 100 SPBT Centre 1	2020	91.50	84.31	77.12	58.17	163
Virtual Comparator	2020	90.52	87.12	73.07	57.25	1530
Local Authority 100 SPBT Centre 1	2019	93.10	88.51	72.41	60.92	174

- How many S4 pupils got no Literacy and/or Numeracy award in S4? Have these pupils returned for S5?
- What does Literacy and Numeracy tracking look like in your school?
- What opportunities exist for pupils to develop Literacy and Numeracy through the Senior Phase?

If you need to drill deeper use Change Options to select 'Highest SCQF Course Attained' to check the numeracy/literacy attainment for pupils who have attained a level 5 qualification, for example.

